

DORVAL CONVICTIONS

May 31, 2019

Document intended for professional clients and non professional clients (in accordance with MIFID)
The Fund is a Fonds Commun de Placement (FCP) organized under the laws of France and authorized by the Autorité des Marchés Financiers for sale in France in accordance with the requirements set forth in its prospectus.



EURO ZONE EQUITIES FLEXIBLE FUND 0 to 100%

NAV Share R : 141.85 €

NAV Share I : 1,555.36 €

NAV Share N : 86.73 €

Assets Under

Management : 642,215,305.32 €

ISIN Code Share R : FR0010557967

ISIN Code Share I : FR0010565457

ISIN Code Share N : FR0013299187

BLOOMBERG Code Share R : DORCONV FP EQUITY

BLOOMBERG Code Share I : DORCONI FP EQUITY

BLOOMBERG Code Share N : DORCONN FP EQUITY

Fund Managers : Louis Bert, Stéphane Furet

MANAGEMENT PHILOSOPHY

Created on 31 December 2007, DORVAL CONVICTIONS is a diversified Eurozone fund. Its equity component may vary between 0% and 100%. The asset management approach seeks to limit capital losses in periods of market decline while increasing exposure to equities in periods of recovery. The benchmark index is composed of 50% the overnight reference rate (capitalised EONIA) and 50% the 50 largest listed European companies (EUROSTOXX 50 NR), total return since January 1st, 2013.

The process involves 4 steps: determining the equity exposure rate, identifying investment themes, determining the equity allocation per capitalisation and selecting individual companies. The remainder of the portfolio is invested in money market and fixed income funds in order to preserve the capital and reduce the portfolio's overall volatility.

RISK AND REWARD PROFILE



The risk-return scale (profile) is an indicator with a score from 1 to 7. It corresponds to an increasing level of risk and return. It is the result of a regulatory methodology based on annualised volatility, calculated over 5 years. Checked on a periodic basis, the indicator can vary.

PERFORMANCE

	1Mth	3Mths	6Mths	YTD	1Yr	3Yrs	5Yrs	Since 31/12/2007
Performance DC Share R	-4.6	-2.0	-1.1	1.6	-12.7	1.6	6.4	41.9
Performance DC Share I	-4.5	-1.8	-0.7	1.9	-12.0	3.8	10.5	/
Performance Indicateur (*)	-2.8	0.7	2.9	5.7	-0.5	8.0	9.0	4.8
Performance EuroStoxx50 (*)	-5.5	1.3	5.7	11.6	-1.0	16.1	15.7	-10.4

	2019	2018	2017	2016	2015	2014	2013
Performance DC Share R	1.6	-15.3	13.8	2.4	9.4	2.5	15.8
Performance DC Share I	1.9	-14.6	14.6	3.2	10.1	3.4	16.5
Performance Indicateur (*)	5.7	-6.2	4.4	2.3	3.8	2.4	10.7
Performance EuroStoxx50 (*)	11.6	-12.0	9.2	3.7	6.4	4.0	21.5

MONTHLY COMMENTARY

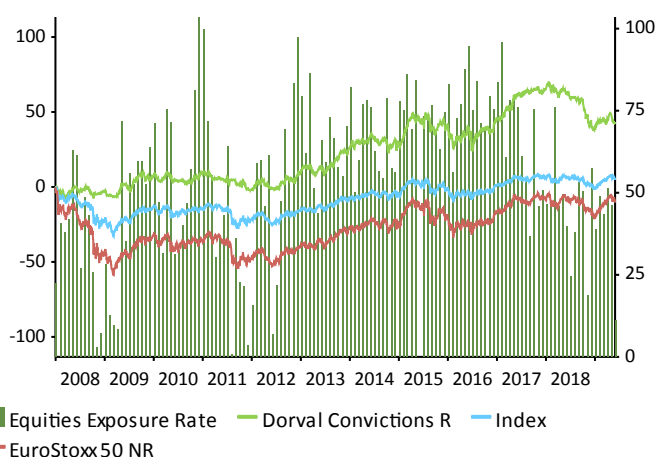
The start of the year was characterised by hopes of a US-China trade agreement, as well as support from the central banks, but the stock-markets have just suffered their worst month of the year in May. The surprise hike in US border tariffs from 10% to 25% on \$200bn of Chinese imports, followed by China's threats of retaliation have sent equity indices into a tailspin. Meanwhile, Donald Trump's latest threat to slap 5% duties on all Mexican imports in an attempt to combat illegal immigration from the country has further hampered US economic growth and also the world economy as a whole. Against this backdrop, risk aversion has soared and the question now is just what economic impact we can expect from this battle of wills between the two world leaders. The recovery that was emerging over recent months is again compromised, although there is no question of a recession yet. However, this changing situation has cast doubt over our main scenario of a cyclical recovery conditional on a stabilisation in political risk. In light of this overall situation and in view of the type of stocks in our portfolio – which are more volatile in market turmoil – we have tactically cut back our exposure rate for Dorval Convictions to around 15% as at May 31, by hedging via Eurostoxx50 futures. Looking to the stocks in our portfolio this month, the fund's underperformance was primarily attributable to the correction from Solutions 30, which tumbled 25% after US hedge fund Muddy Waters took a short position on the stock (negative impact of 1.40%). By way of reminder, Solutions 30 reported an 88% jump in revenues for 1Q 2019 and expects earnings to grow by more than 50% in 2019 and to rise by over 30% in 2020. We also note that Wirecard has gained considerably since its low in February (with the share price surging from €87 to €140) after reporting sound business figures for the start of 2019.

RISK ANALYSIS

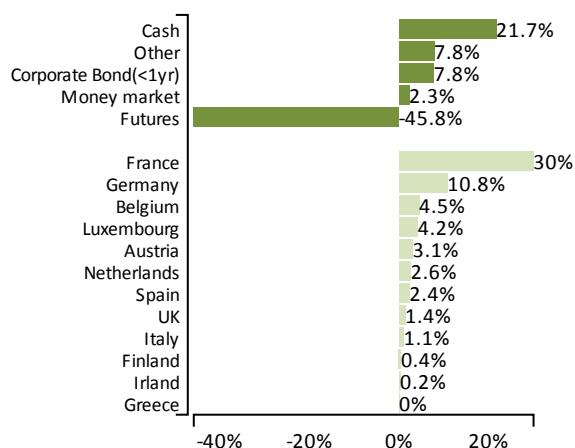
Ratio	1 Yr	3 Yrs	5 Yrs
Alpha	-0.24	-0.04	-0.01
Beta	1.00	1.03	1.06
Sharpe Ratio	-1.43	0.10	0.14
Tracking Error	5.20	5.12	5.44
Information Ratio	-2.35	-0.41	-0.09
Volatility DC Share R	8.0	9.2	10.5
Volatility Indicateur	5.6	5.9	7.4
Volatility EuroStoxx50	13.3	14.0	17.6

Ratio	Value	
Max performance	84.0%	from 10/10/08 to 22/01/18
Max drawdown	-19.1%	from 22/01/18 to 20/12/18
Recovery period	-	Days
Profitable months	56.2%	monthly

MONTHLY EXPOSURE SINCE INCEPTION



PORTFOLIO BREAKDOWN



Equities Exposure Rate

11.2%

Equities 57.0%
Futures & Options -45.8%

Sectorial Breakdown

% AUM

Technology 17.0
Consumer Services 11.9
Industrials 9.0
Consumer 6.3
Financials 5.2
Oil & Gas 2.1
Telecommunications 1.6
Health Care 1.5
Basic Materials 1.2
Utilities 1.2

Capitalisation Size

% AUM

> 5 Bi € 34.6
From 1 to 5 Bi € 12.4
From 500 Mi to 1 Bi € 8.8
< 500 Mi € 1.2

Number of holdings :

73

Top 5 holdings : 19.2 %

Top 10 holdings : 28.7 %

Main portfolio holdings

1 - WIRECARD AG
2 - SOLUTIONS 30 SE
3 - EUROPCAR GROUPE
4 - GROUPE FNAC
5 - S&T AG
6 - CFE
7 - CARREFOUR
8 - ACCOR SA
9 - ALTRAN TECH
10 - TOTAL

Main holdings changes

RENAULT SA SOLD
NATIXIS SOLD
TELEPERFORMANCE REDUCED
DEUTZ AG REDUCED
BNP PARIBAS REDUCED

CHARACTERISTICS

ISIN Code Share R FR0010557967
ISIN Code Share I FR0010565457
ISIN Code Share N FR0013299187
Bloomberg Code Share R DORCONV FP EQUITY
Bloomberg Code Share I DORCONI FP EQUITY
Bloomberg Code Share N DORCONN FP EQUITY
Inception Date December 31st, 2007
Legal Form Mutual Fund french law
Investment Universe European Equities, all capitalization size
Eligible to PEA NO
UCITS Compliant YES
NAV Frequency Daily (market closure)
Management Company DORVAL ASSET MANAGEMENT

Custodian Caceis Bank France
Delegated Financial Manager Caceis Fund Administration
Initial Minimum Subscription 1 share
Cut Off (local time) 13h00
Recommended investment period 3 years
Index 50%EuroStoxx50 NR (EUR) + 50% Eonia capitalization
Subscription fees Index 7D
Management fees share I 2,00% max
Management fees share R 0,80 %
Management fees share N 1,60 %
Redemption fees 1,30 %
Performance fees 0,00 %
20% of outperformance above its index if the fund's performance is positive.
In accordance with regulations, upon written request, the customer may receive details of the compensation relating to the distribution of this product.

CONTACTS

DORVAL ASSET MANAGEMENT

1, rue de Gramont 75002 Paris
Tél. 01 44 69 90 44
Fax. 01 42 94 18 37

www.dorval-am.com



CONTACTS CLIENTS

Gaëlle GUILLOUX

Tel.: +33 1 44 69 90 45 Gaelle.guilloux@dorval-am.com

Denis LAVAL

Tel.: +33 1 44 69 90 43 Denis.laval@dorval-am.com

LEGAL INFORMATION

All data relating to the fund are obtained from the book inventory and data relating to the indices and the characteristics of securities held in the portfolio are obtained from Bloomberg. The figures indicated relate to previous years. Past performance is not a reliable indicator of future performance. Investors are reminded that the composition of the portfolio may differ considerably from that of its benchmark index. As the management style is discretionary, the portfolio will never seek to reproduce the composition of the benchmark index either on a geographical or sector level. The benchmark index is therefore simply an a posteriori performance indicator. The risks and costs relating to investment in UCITS are described in the relevant prospectus. The prospectus and periodic reports are available on request from Dorval Asset Management. The prospectus must be provided to investors prior to subscription. The definition of risk indicators mentioned in this document may be found on the website: www.dorval-am.com. Prior to any investment, it should be verified that the investor is legally authorised to invest in a UCITS. The UCITS is not authorised for distribution in jurisdictions other than the countries in which it is registered. Performance data does not take into account fees and commissions received in respect of the issue and redemption of units or tax costs imposed by the client's country of residence. If a UCITS is subject to a specific tax regime, it should be noted that this regime depends on the individual situation of each client and may be liable to change. This document is intended for professional and non-professional clients. It may not be used for any purpose other than that for which it was designed and may not be reproduced, distributed or transmitted to third parties, either in whole or in part, without the prior written authorisation of Dorval Asset Management. The information contained in this document may not be deemed to have any contractual value whatsoever. Dorval Asset Management may not be held responsible for any decision taken on the basis of information contained in this document. Dorval Asset Management, société anonyme (public limited company) with share capital of EUR 303,025 registered in the Paris trade and companies register under number B 391 392 768 - APE 6630 Z, AMF approval no. GP 93-08

Definitions

Flexible fund:	Financial product for which the allocation between asset classes varies over time in order to adapt to new market configurations at any time.
Alpha:	A fund's outperformance compared with its benchmark, expressed as a percentage. This is an indicator of the manager's ability to create value, by excluding the market effect. Therefore, the higher the alpha, the better the fund's performance compared with that of its benchmark.
Beta:	Measure of a fund's sensitivity to market movements (represented by its benchmark). A beta higher than 1 indicates that the fund amplifies the trends of its reference market on the upside as well as on the downside. Conversely, a beta lower than 1 means that the fund tends to react less to movements in its reference market.
Sharpe ratio:	Indicator of a product's outperformance relative to a risk-free interest rate, given the risk taken (the product's volatility). The higher it is, the better the fund.
Volatility:	Magnitude of the variation of a security, a fund, a market or of an index over a given period. A high volatility means that the price of the security varies significantly, and therefore that the security's associated risk is high.
Maximum performance:	Maximum gain historically recorded by the fund.
Maximum drawdown:	Maximum loss historically recorded by the fund.
Recovery period:	Time expressed in number of days the fund takes to exceed the highest net asset value over the indicated period.
Gain frequency:	Calculation over the fund's history since its creation representing the ratio of the number of positive observations to the total number of observation in the period.
Exposure as a percentage:	The fund's overall exposure takes into account the sum of the physical and off-balance sheet positions. As opposed to positions called of net assets: "physical"(those booked in the portfolio's inventory of assets), off-balance sheet positions include those taken in forward financial instruments, such as derivatives. Examples of derivatives: futures contracts, swaps, option contracts. A maximum limit to off-balance sheet exposure is stated in the prospectus.

Morningstar methodology

© 2018 Morningstar, Inc. All rights reserved.

The information contained herein: (1) is proprietary to Morningstar and/or its content providers; (2) may not be copied or distributed; (3) is not warranted to be accurate, complete or timely.

Neither Morningstar nor its content providers are responsible for any damages or losses arising from any use of this information.

Past performance is no guarantee of future results. References to rankings, awards and/or ratings are not an indicator of future performance by the fund or the fund manager.

The Morningstar rating applies to funds with a history of at least three years. It takes into account subscription fees, the risk-free return and the fund's volatility in order to calculate the MRAR (Morningstar Risk Adjust Return) ratio for each fund. The funds are then ranked by decreasing order of MRAR: the first 10% receive 5 stars, the next 22.5% 4 stars, the next 35% 3 stars, the next 22.5% 2 stars, and the last 10% receive 1 star. The funds are ranked within 180 European categories.

Reporting generated with <https://fundkis.com>.